

RPB® Z-LINK® RESPIRATOR

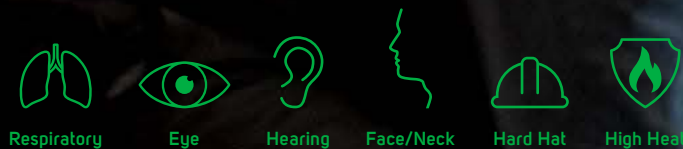
Complete versatility.

The RPB Z-Link offers numerous configurations so you can wear it your way. From grinding and welding (with the Z-Link+), to smelting in high heat environments (with the Z-Link Radiant Heat), the Z-Link builds the foundation for the most versatile respirator on the planet. Designed with your comfort in mind, the Z-Link ensures you'll always be protected for life's best moments.

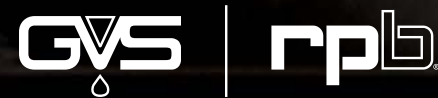
The Z-Link's large visor acts as the framework for multiple accessories to easily transform your protection to suit your environment. With the visor's widened perspective, this provides you with an exceptional downward and peripheral field of view and with the hinge visor opening, this gives you the ability to easily communicate outside of the work environment. With 5 lens options (including a shade 5 lens), the Z-Link also lends itself to arc spraying.

To further increase your comfort and stability, the Z-Link can also be fitted with the Comfort-Link™ padding system for an even greater level of comfort. Experience complete protection and versatility with the RPB Z-Link.

The Z-Link offers superior protection in all key areas:



Respiratory Eye Hearing Face/Neck Hard Hat High Heat



Protecting you for life's best moments.



Features & Benefits Z-Link®

Optimal vision and high velocity impact protection with large optically-clear safety lens (replaceable spare part). Choice of 5 anti-fog and scratch resistant ANSI Z87+ (EN166) lenses: Premium Clear, Green Tint (Shade 5), Yellow Tint, Black Tint, and Mirror Tint. **Tear-off lens system ensures you have a clear field of view at all times.**

Air flow and distribution is fully adjustable with the air deflector system to suit your personal preference. ■

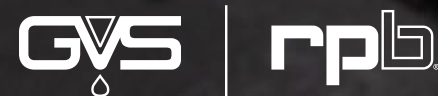
Air supply circulates throughout the headtop, moving over your skin to cool you down, enhancing your experience of comfort.

Fixed jaw ensures secure cape attachment. ■

All parts can be purchased individually for ease of maintenance and servicing.

Vision-Link™ light mount point. ■

Visor shown open for marketing purposes only. Do not open your visor in the work environment. US Patent No. US D802,117 S.



Protecting you for life's best moments.



■ ANSI Z89.1 certified head protection (EN397).

■ Visor hinges open for easy communication with the team (outside of respiratory hazards).

■ Padded interior with adjustable ratchet system ensures a perfect customized fit that supports movement, increasing comfort and productivity. **The optional Comfort-Link™ padding system provides further comfort and stability.**



Shown without cape for marketing purposes only. >>

■ Compatible with RPB Comms-Link™ in-helmet communication system.

■ Zyltec® FR face seal or shoulder cape available. **FR breathing tube cover available to increase the life of the breathing tube.**

Certifications

ISO9001
CERTIFIED COMPANY

NIOSH
National Institute for Occupational Safety and Health
PAPR & SAR Type C

ANSI
S3.19
HEARING PROTECTION
Only in conjunction with 18-533 earmuffs.

Z89.1
HARD HAT PROTECTION
Type 1 Class G

Z87+
EYE & FACE PROTECTION

PRODUCT CERTIFICATION
BSI Certified Product
AS/NZS 1716:2012
BMP# 714303
RESPIRATORY PROTECTION

AS/NZS 1801:1997
BMP# 714306
HARD HAT PROTECTION

AS/NZS 1337.1:2010
BMP# 714304
EYE & FACE PROTECTION

CE 2797
UK 0086

EN14594:2005 3B
EN12941:1998
+A2:2008 TH3/2/1 P R SL
RESPIRATORY PROTECTION
See instruction manual for protection levels.

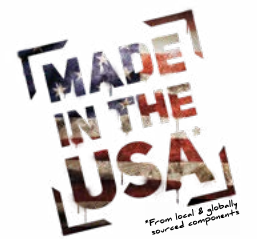
EN352-3:2002
HEARING PROTECTION
Only in conjunction with 18-533 earmuffs.

EN397:2012+A1:2012
HARD HAT PROTECTION
Conforms to impact and optional clauses.

EN166:2001 CLASS 1 BT 9 3
EYE & FACE PROTECTION

SEI
Certified Model
Modèle certifié

CSA Z94.3-15
EYE & FACE PROTECTION
Class 7D Respirator Facepiece
PROTECTION DES YEUX
ET DU VISAGE
Masque respiratoire classe 7D



For more information visit
rpbafety.com/z-link

Features & Benefits Z-Link+

The Z-Link+ utilizes the Z-Link headtop as the framework for this product, offering all the same features and benefits of the Z-Link while extending the product's capabilities to protect you while welding.

The Z-Link+ weld visor weighs just 13.8 ounces (390g) including ADF lens. This can be easily removed for extended periods where just grinding is required.



Large welding auto darkening filter with a 1/1/1/2 rating. Variable auto darkening lens (shades 3, 5, or 9-13). Replaceable impact and ADF lenses for ease of maintenance.
Optional magnifying lens available.



Z-Link+ visor attaches directly onto to the main grinding visor, enabling you to seamlessly switch from welding to grinding while maintaining respiratory protection.

Certifications

All Z-Link® certifications apply. The Z-Link+ offers additional certifications, indicated in green below:

ISO9001
CERTIFIED COMPANY

NIOSH
National Institute for Occupational Safety and Health
PAPR & SAR Type C

ANSI
S3.19
HEARING PROTECTION
Only in conjunction with 18-533 earmuffs.

Z89.1
HARD HAT PROTECTION
Type 1 Class G

Z87+
EYE & FACE PROTECTION

Z87W
WELDING EYE PROTECTION

PRODUCT CERTIFICATION
BSI Certified Product
AS/NZS 1716:2012
BMP# 714303
RESPIRATORY PROTECTION

AS/NZS 1801:1997
BMP# 714306
HARD HAT PROTECTION

AS/NZS 1337.1:2010
BMP# 714304
EYE & FACE PROTECTION

AS/NZS 1338.1:2012
BMP# 714305
WELDING EYE PROTECTION

CE 2797
UK 0086

EN14594:2005 3B
EN12941:1998
+A2:2008 TH3/2/1 P R SL
RESPIRATORY PROTECTION
See instruction manual for protection levels.

EN352-3:2002
HEARING PROTECTION
Only in conjunction with 18-533 earmuffs.

EN397:2012+A1:2012
HARD HAT PROTECTION

EN166:2001 CLASS 1 BT 9 3
EYE & FACE PROTECTION

EN379:2003
WELDING EYE PROTECTION

SEI
Certified Model
Modèle certifié

CSA Z94.3-15
EYE & FACE PROTECTION
Class 7D Respirator Facepiece
PROTECTION DES YEUX
ET DU VISAGE
Masque respiratoire classe 7D



Features & Benefits Z-Link® Radiant Heat

Utilizing the Z-Link framework, the RPB Radiant Heat kit attaches to the Z-Link headtop, enabling you to work in high heat environments while experiencing unrivaled comfort and protection.

Gold coated visor reflects radiant heat, minimizing heat transfer for increased comfort while ensuring eye protection.

Visor options include anti-scratch gold coated (pictured), anti-scratch IR5 gold coated, and IR5.



Large visor lift tab enables you to easily raise and lower visor while wearing gloves.

Airflow is dispersed throughout your breathe zone, as well as over your head, neck and upper body to aid in cooling.



Protecting you for life's best moments.



■ Integrated hard hat protection.



■ The aluminized fabric is flame resistant and protects the skin from sparks, splashes and radiant heat. Manufactured from Newtex Z-Flex O-310 Aluminized FR O-PAN/Aramid fabric.

■ Clip-on visor requires no tools for easy detachment and replacement.

■ Secured cape ensures the hood moves with you for a greater range of movement.

Aluminized breathing tube cover is available to increase the life of the breathing tube.

For more information visit rpbsafety.com/z-link-radiant-heat

Certifications

All Z-Link® certifications apply.

ISO9001
CERTIFIED COMPANY

NIOSH
National Institute for Occupational Safety and Health
PAPR & SAR Type C

ANSI
S3.19
HEARING PROTECTION
Only in conjunction with 18-533 earmuffs.

Z89.1
HARD HAT PROTECTION
Type 1 Class G

Z87+
EYE & FACE PROTECTION

PRODUCT CERTIFICATION
BSI Certified Product
AS/NZS 1716:2012
BMP# 714303
RESPIRATORY PROTECTION

AS/NZS 1801:1997
BMP# 714306
HARD HAT PROTECTION

AS/NZS 1337.1:2010
BMP# 714304
EYE & FACE PROTECTION

CE 2797
UK 0086

EN14594:2005 3B
EN12941:1998
+A2:2008 TH3/2/1 P R SL
RESPIRATORY PROTECTION
See instruction manual for protection levels.

EN352-3:2002
HEARING PROTECTION
Only in conjunction with 18-533 earmuffs.

EN397:2012+A1:2012
HARD HAT PROTECTION

EN166:2001 CLASS 1BT 9 3
EYE & FACE PROTECTION



Certified Model
Modèle certifié

CSA Z94.3-15
EYE & FACE PROTECTION
Class 7D Respirator Facepiece
PROTECTION DES YEUX
ET DU VISAGE
Masque respiratoire classe 7D



Build Your RPB® Z-Link® Respirator

Note: Not all configurations may be available in your region.

1 Choose Your Headtop



→ Z-Link®



→ Z-Link+®



→ Z-Link® Radiant Heat
Jump to **3 Choose Your Air Supply**

2 Choose Your Cape



→ Zytec® FR Face Seal



→ Zytec® FR Shoulder Cape



→ Zytec® FR Chin Seal

3 Choose Your Air Supply



→ **PX5® (PAPR)**
HEPA, OV/AG/HE, Multi-Gas/HE, A2P,
ABE1P & ABEK1P cartridges/filters available.



→ **HX5™ (PAPR)**
HEPA filters available.



→ **C40™ Climate Control Device (SAR)**

4 Choose Your Upgrades



→ **Comms-Link™** In-helmet
communication system



→ **Comfort-Link™**
Side padding system



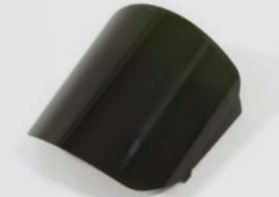
→ **Vision-Link™** 650 lumen
helmet lighting system



→ **Quiet-Link™** Ear defenders
US Patent No. US D788,991 S.



→ **Safety Lens**
Anti-fog / Anti-Scratch
Available as yellow tinted,
mirror tinted, or smoke tinted.



→ **Safety Lens**
Infrared (Shade 5)



→ **Radiant Heat Gold Coated
Visor - Anti-Scratch**
Available as standard gold
coated and IR5 gold coated.



→ **Radiant Heat IR5 Visor**
(Radiant Heat only.)



→ **Tear-off Lens**
Available in packs of 50.



→ **Ultra Magnifying Lens**
Available in 1.0, 1.5, 2.0 and 2.5.



→ **FR Hose Cover**
Breathing tube not included.



→ **Aluminized Hose Cover**
Breathing tube not included.

**BUILD & PRICE
YOUR RESPIRATOR**

Visit [rpbsafety.com
/z-link/build](http://rpbsafety.com/z-link/build)
or give us a call
1-866-494-4599



Protecting you for life's best moments.