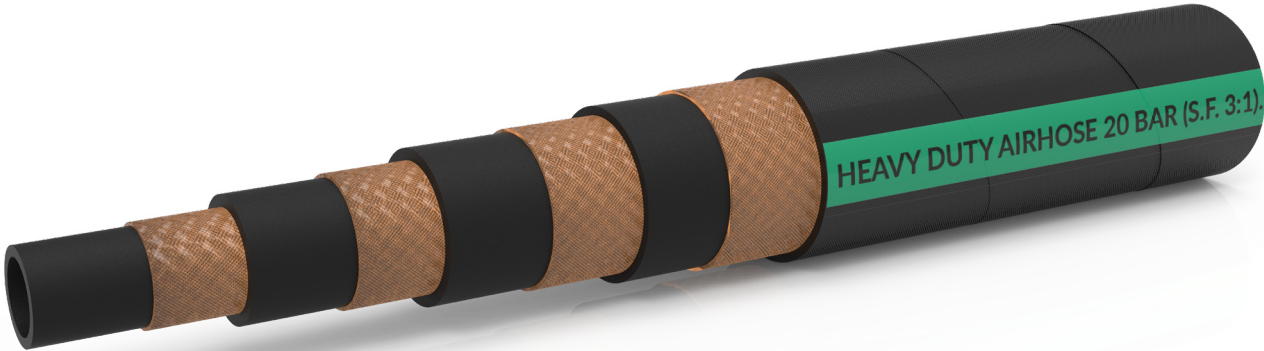


Technical Data Sheet

Heavy Duty Air Hose



Note: Read and follow the Blastline Blast machine operations manual and provide proper training for all users of the device in order to achieve a safe and effective blasting operation.



Application

Suitable for delivering water and compressed air with light traces of lubrication oil or oil mist in construction sites, blasting sites, quarries and mines.

Features

Heavy Duty Air Hose is designed for the most severe working environments. This mandrel built hose has a high margin of safety and is easily noticeable, durable, long lasting and weather resistant, even under extreme working conditions.

Technical Specifications

Tube: Antistatic NR/SBR rubber, smooth, black, oil mist resistant.

Reinforcement: High strength polyester/rayon cord

Cover: Antistatic NR/SBR rubber, yellow wrapped finish, abrasion and weather resistant.

Working Temperature: (-35°C to +70°C
-31°F to +158°F)

Factor of Safety: 3:1

Branding Heavy Duty Air Hose W.P. 20 Bar / 290 Psi
Standard Length Rolls of 20, 40m / 50, 75, 100ft

EXCEEDS ISO 1307:2006

Product Details

Code	Internal Diameter		External Diameter		Working Pressure		Weight	
	Inch	mm	Inch	mm	Psi	Bar	lbs/ft	kg/m
AM 1323	1/2"	13	0.90	23	290	20	0.25	0.38
AM 1928	3/4"	19	1.25	28	290	20	0.43	0.65
AM 2537	1"	25	1.56	37	290	20	0.62	0.93
AM 2541	1"	25	1.62	41	290	20	0.76	1.14
AM 3245	1¼"	32	1.84	45	290	20	0.87	1.3
AM 3850	1½"	38	2.12	50	290	20	1.07	1.6
AM 5167	2"	51	51	67	290	20	1.57	2.35
AM 6387	2½"	63.5	3.42	87	290	20	2.41	3.6
AM 7695	3"	76	3.73	95	290	20	2.48	3.7
AM 1012	4"	102	4.87	124	290	20	3.42	5.1